

HEBEI SHENGTIAN PIPE-FITTING GROUP CO.,LTD.

Xiwang new district, Mengcun county, China

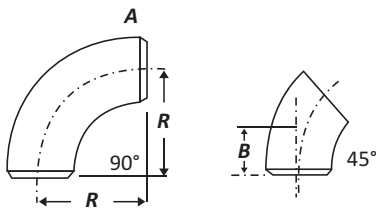
<http://www.pipefittingbr.com> <http://www.stpipefitting.com>

Tel:0086-317-5298199 Email:sale@stpipefitting.cn

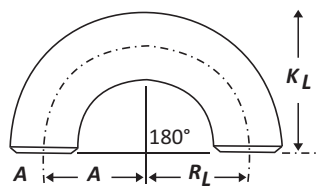
SUA CONEXÃO COM A SEGURANÇA, QUALIDADE E TECNOLOGIA

DIMENSÕES DAS CONEXÕES TUBULARES ANSI B16.9 / MSS SP 43

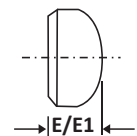
CURVAS



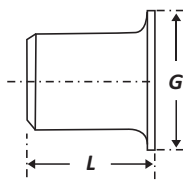
CURVAS 180°



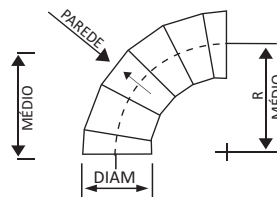
CAPS



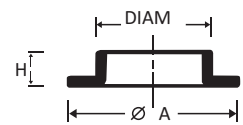
LAP JOINTS STUB ENDS



EM GOMAS



PESTANAS CURTA ESTAMPADA



Diâmetro Nominal	Diâmetro Externo	RAIO 'R'		B (1.5 D)	K	E / E1	G	COMPRIMENTO 'L'	
		1 D	1.5 D					MSS SP 43	ANSI B 16.9
½	21.3	12.7	38.1	15.9	48	25.4	34.9	50.8	76.2
¾	26.7	19.05	38.1	19.0	51	25.4	42.8	50.8	76.2
1	33.4	25.4	38.1	22.2	56	38.1	50.8	50.8	101.6
1 ¼	42.2	31.75	47.6	25.0	70	38.1	63.5	50.8	101.6
1 ½	48.3	38.1	57.15	28.6	83	38.1	73.0	50.8	101.6
2	60.3	50.8	76.2	35.0	106	38.1	92.0	63.5	152.4
2 ½	73.0	63.5	95.25	44.0	132	38.1	106	63.5	152.4
3	88.9	76.2	114.3	50.8	159	50.8	127.0	63.5	152.4
3 ½	101.6	88.9	133.35	57.2	184	64	139.7	76.2	152.4
4	114.3	101.6	152.4	63.5	210	64	157.2	76.2	152.4
5	141.3	127.0	190.5	79.4	262	76.2	185.7	76.2	203.2
6	168.3	152.4	228.6	95.3	313	89	218	88.9	203.2
8	219.1	203.2	304.8	127.0	414	102	270.0	101.6	203.2
10	273.1	254.0	381.0	158.7	518	127	324.0	127.0	254.0
12	323.9	304.8	457.2	190.5	619	152	381.0	152.4	254.0
14	355.6	355.6	533.4	222.2	711	165	412.8	152.4	305.0
16	406.4	406.4	609.6	254.0	813	178	470.0	152.4	305.0

Diâmetro Nominal	Diâmetro Externo	RAIO 'R'		B (1.5 D)	K	E / E1	G	COMPRIMENTO 'L'	
		1 D	1.5 D					MSS SP 43	ANSI B 16.9
18	457.2	457.2	685.8	285.7	914	229 *	533.4	152.4	305.0
20	508.0	508.0	762.0	317.6	1016	254 *	584.2	152.4	305.0
22	558.8	558.8	838.2	343.0	1118	254 *	641.4	152.4	305.0
24	609.6	609.6	914.4	381.0	1219	305 *	692.2	152.4	305.0
26	660.0	660.0	991.0	405.0	-	267.0	-	-	-
28	711.0	711.0	1067.0	438.0	-	267.0	-	-	-
30	762.0	762.0	1143.0	470.0	-	267.0	-	-	-
32	813.0	813.0	1219.0	502.0	-	267.0	-	-	-
34	864.0	864.0	1295.0	533.0	-	267.0	-	-	-
36	914.0	914.0	1372.0	565.0	-	267.0	-	-	-
38	965.0	965.0	1448.0	600.0	-	305.0	-	-	-
40	1016.0	1016.0	1524.0	632.0	-	305.0	-	-	-
42	1067.0	1067.0	1600.0	660.0	-	305.0	-	-	-
44	1118.0	1118.0	1676.0	695.0	-	343.0	-	-	-
46	1168.0	1168.0	1753.0	727.0	-	343.0	-	-	-
48	1219.0	1219.0	1829.0	759.0	-	343.0	-	-	-
-	-	-	-	-	-	-	-	-	-

* Todas as dimensões estão em mm